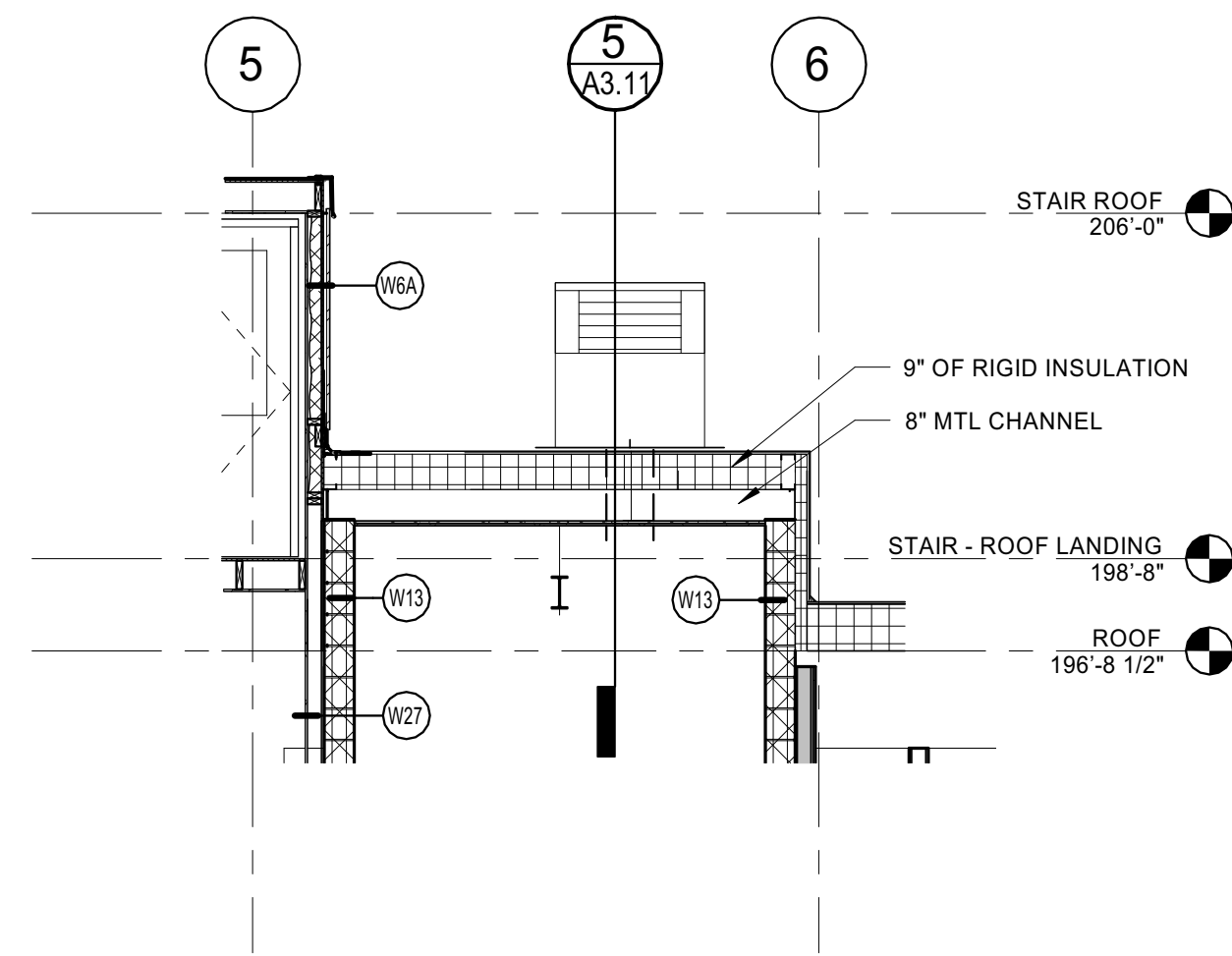


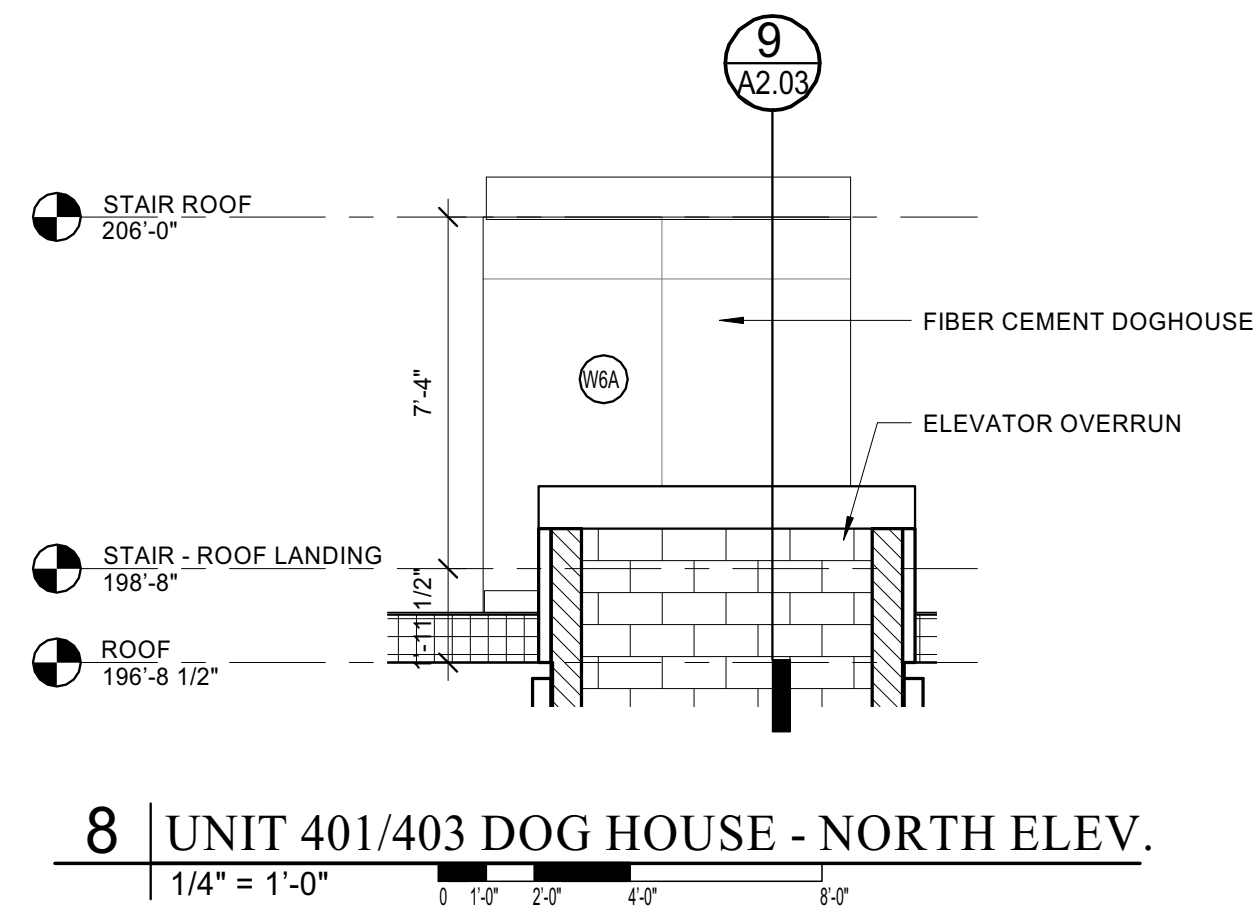


Reviewed for Code Compliance  
Inspection Division  
Approved with Conditions

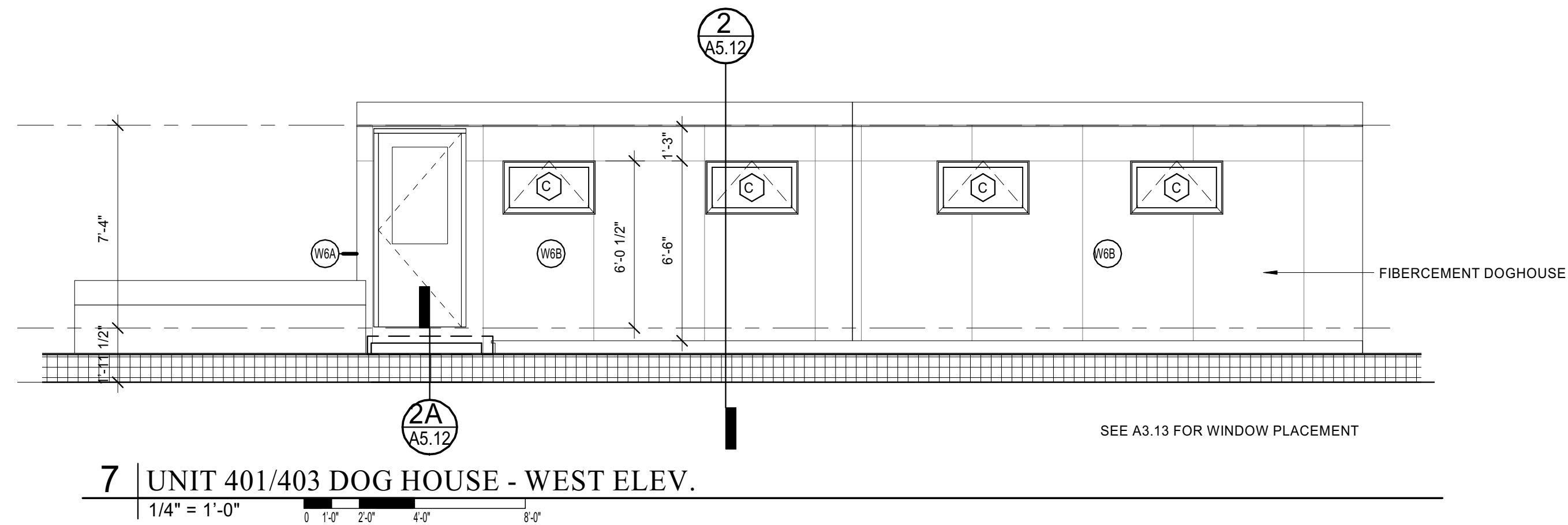
Date: 05/16/14



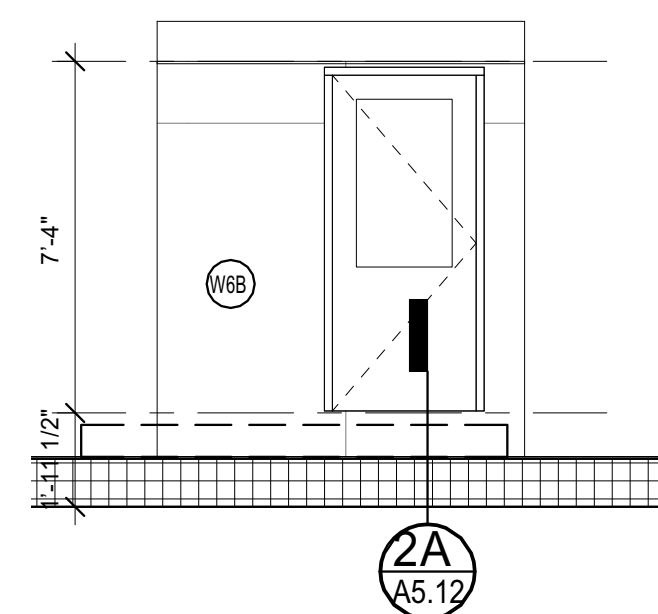
9 | ELEVATOR/DOGHOUSE SECTION



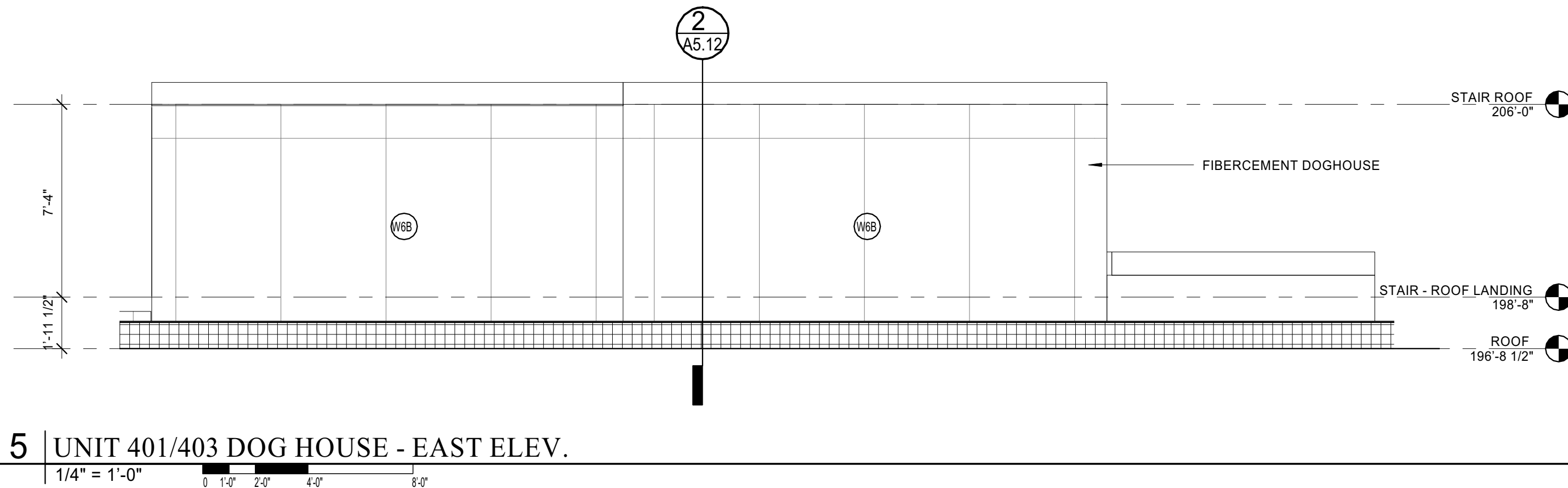
8 | UNIT 401/403 DOG HOUSE - NORTH ELEV.



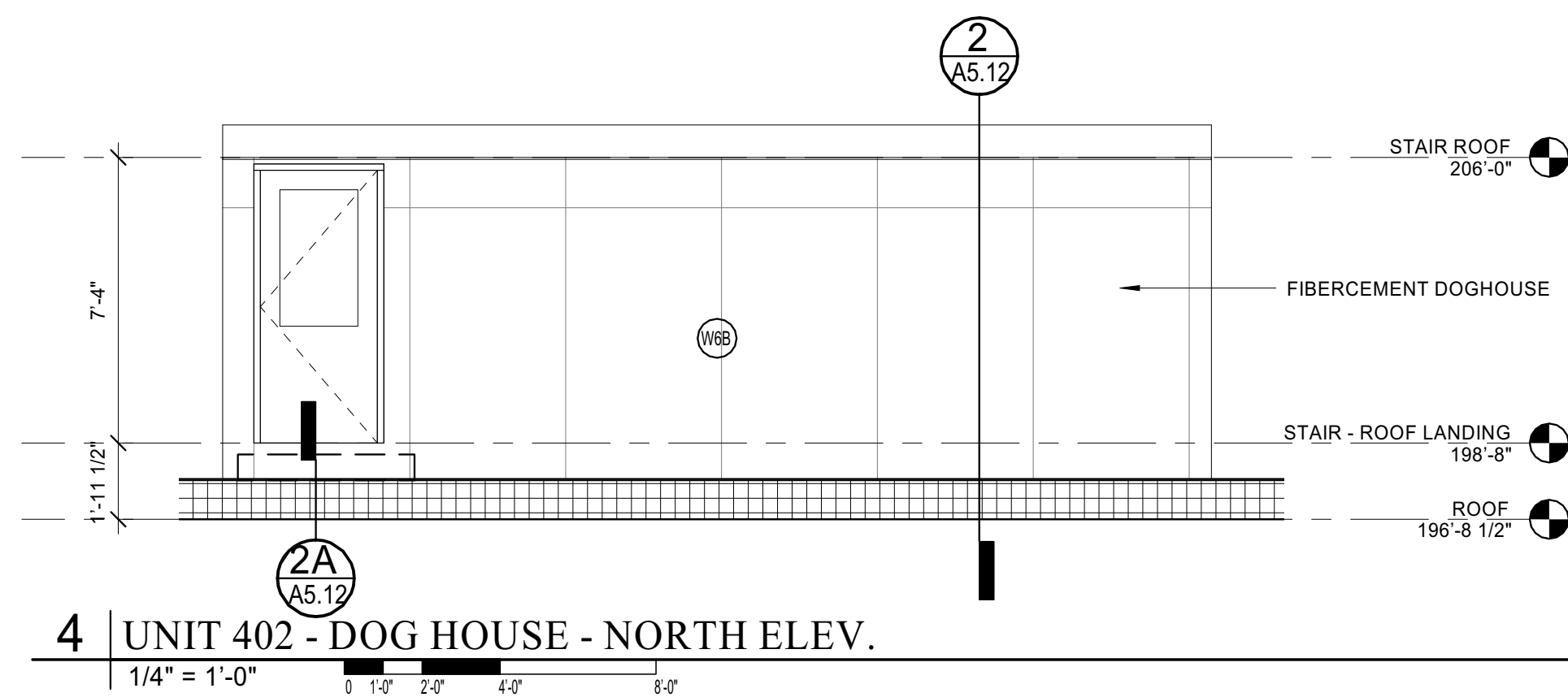
7 | UNIT 401/403 DOG HOUSE - WEST ELEV.



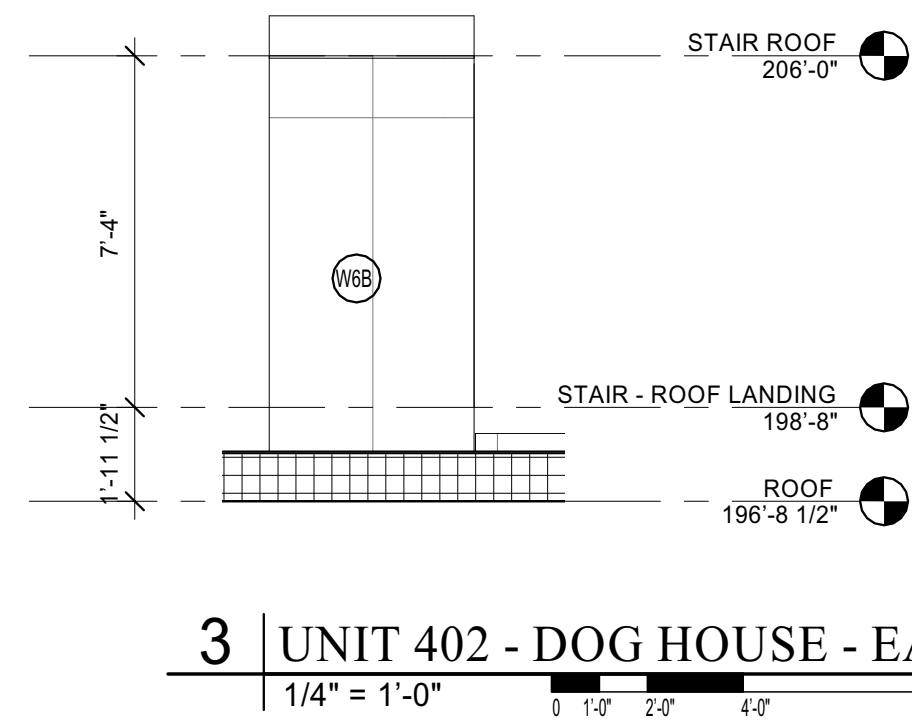
6 | UNIT 401/403 DOG HOUSE - SOUTH ELEV.



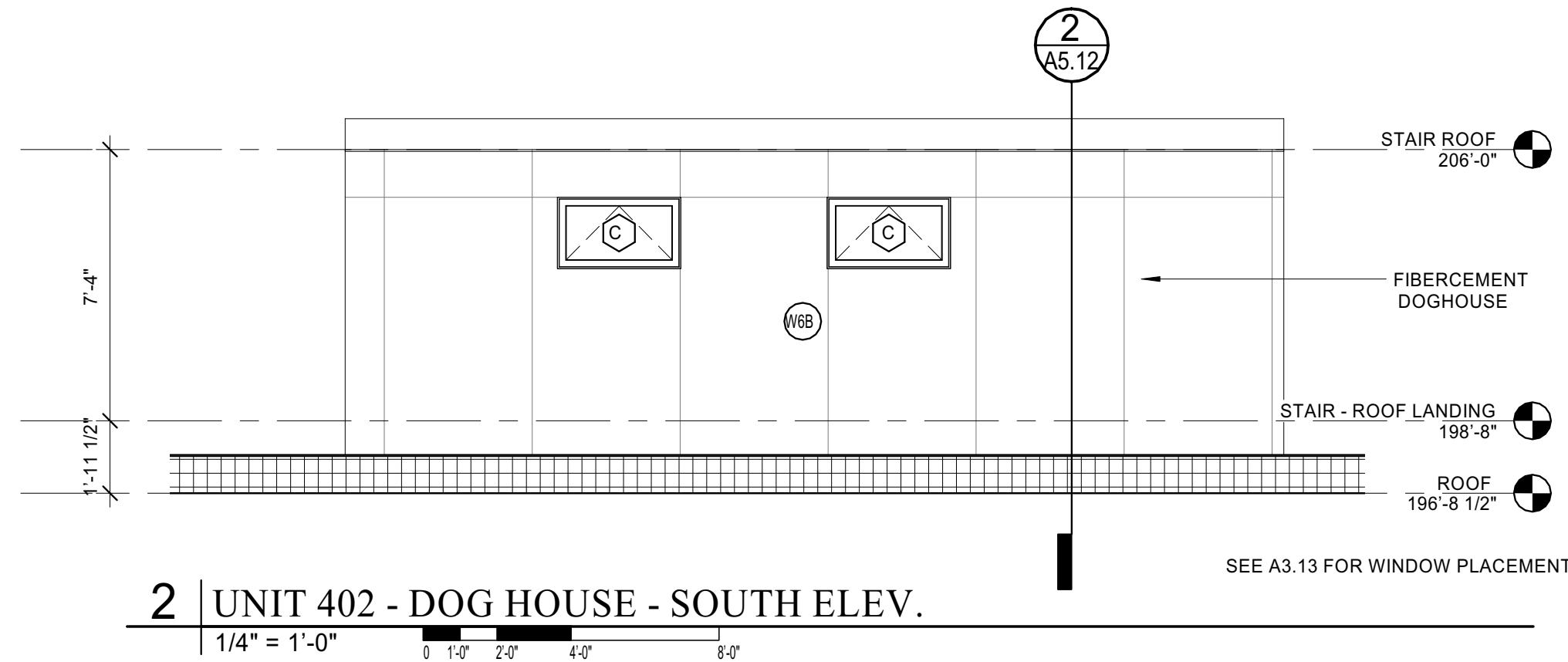
5 | UNIT 401/403 DOG HOUSE - EAST ELEV.



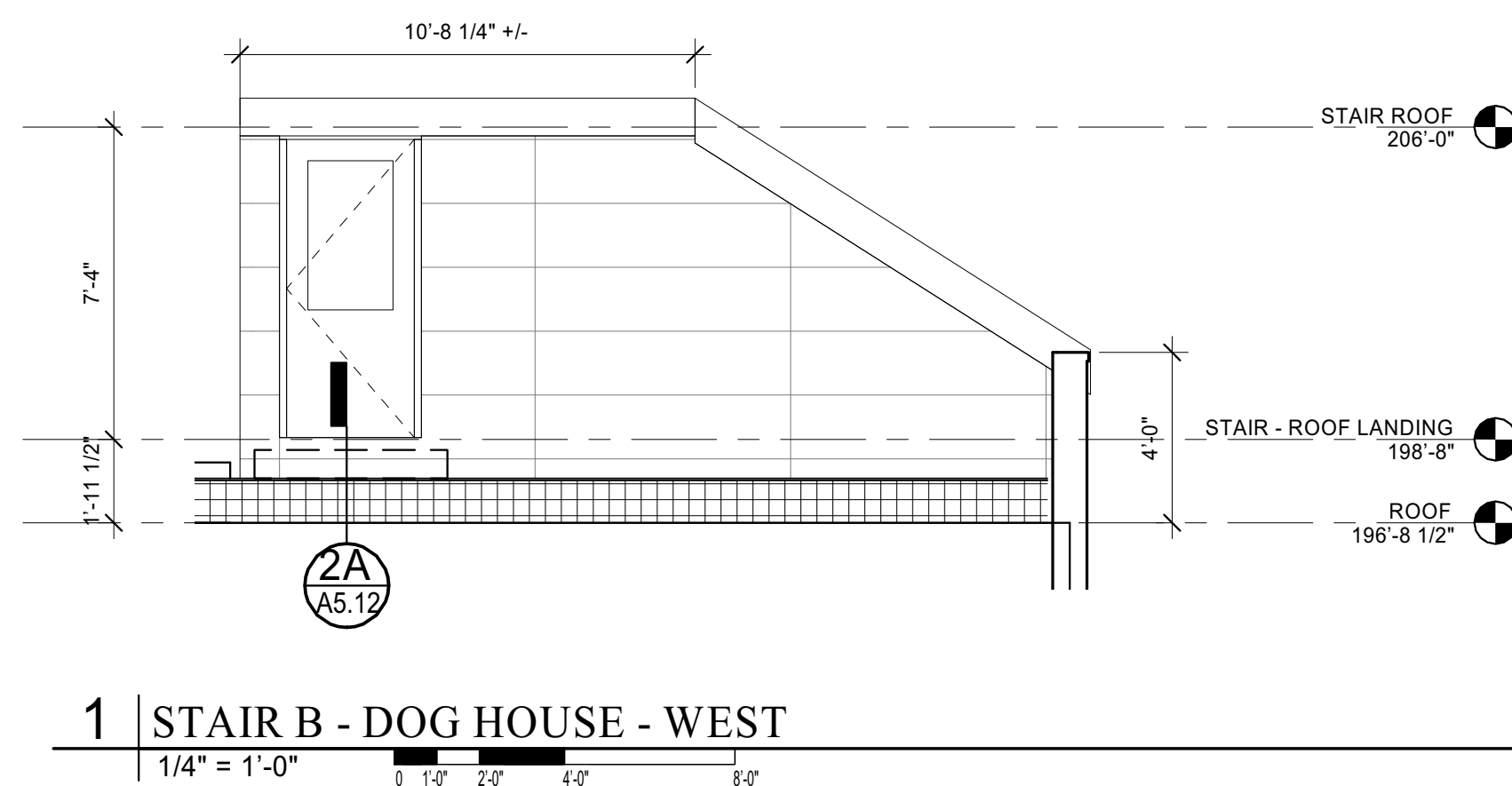
4 | UNIT 402 - DOG HOUSE - NORTH ELEV.



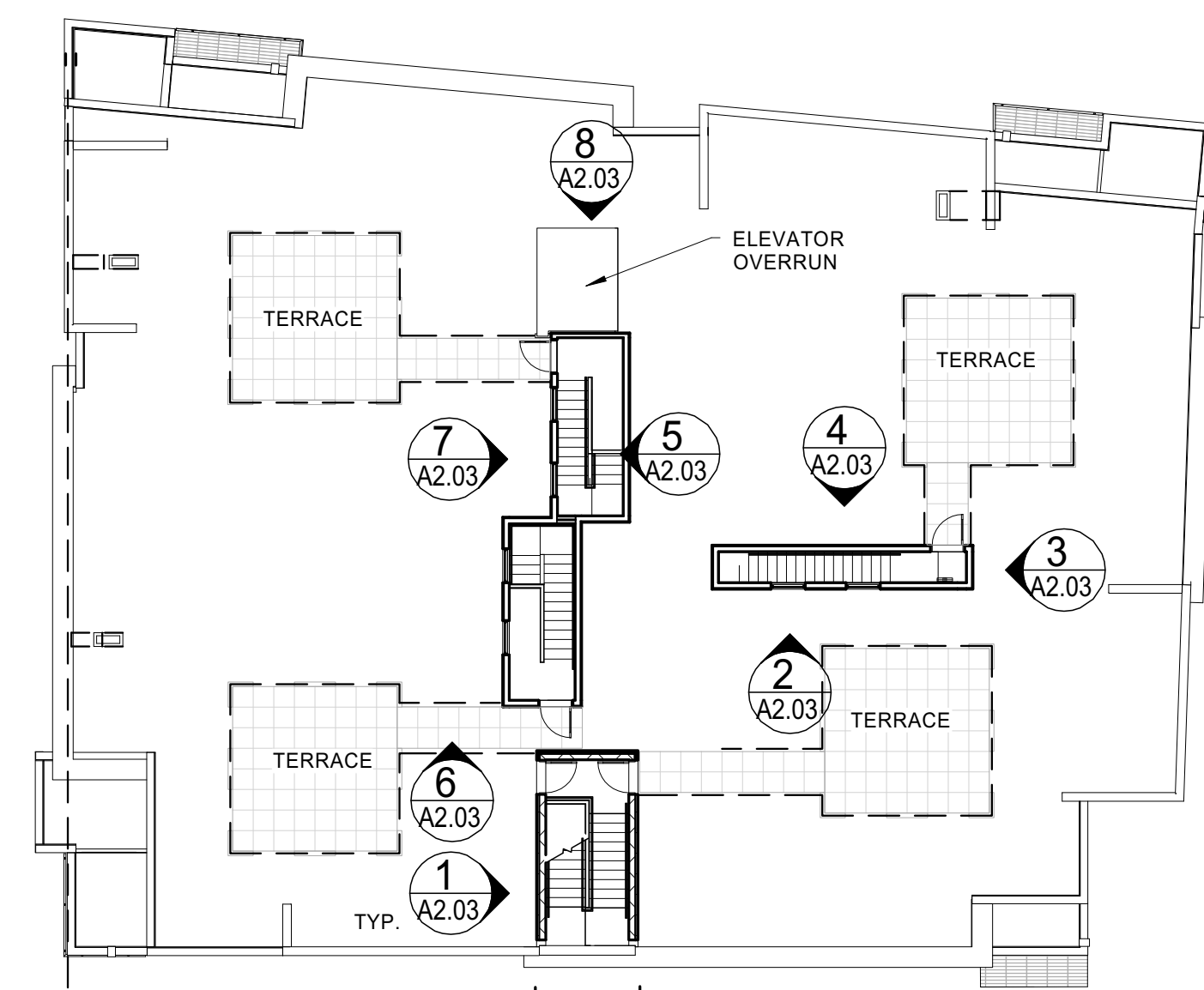
3 | UNIT 402 - DOG HOUSE - EAST/WEST ELEV.



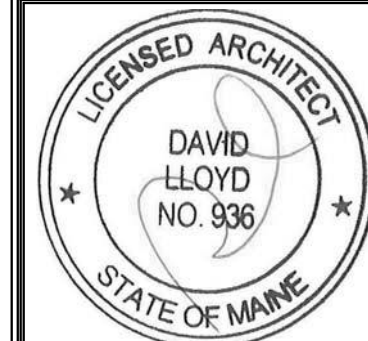
2 | UNIT 402 - DOG HOUSE - SOUTH ELEV.



1 | STAIR B - DOG HOUSE - WEST



KEY PLAN - NTS



Prepared For:  
118 on Munjoy  
Hill, LLC

Consultant:

Architect:  
**ARCHETYPE**  
architects  
48 Union Wharf Portland, Maine 04101  
(207) 772-6022 Fax (207) 772-4056

Project:  
118 ON MUNJOY  
HILL  
118 CONGRESS STREET  
PORTLAND, MAINE

Revisions:

Date:  
07 MAR 2014  
Scale:  
As indicated  
BUILDING ELEVATIONS

A2.03